

PANIL Notes

Volume 28 Issue 6—Piedmont Avenue Neighborhood Improvement League—PO Box 20375—Oakland, CA 94620—May 2003

GLEN ECHO CREEK

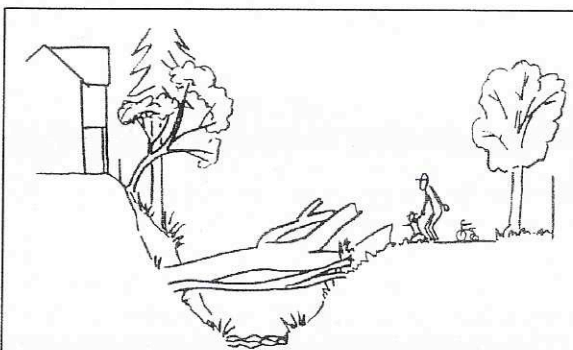
Creek restoration project

By Arleen Feng

After several years of dialogue with PANIL and park neighbors, the Alameda County Flood Control District is finalizing its restoration of the section of Glen Echo Creek between Monte Vista Avenue and Montell Street. At a community meeting in October 2002, District engineer Art Valderrama and restoration specialist Jorgen Blomberg from Philip Williams & Associates (PWA) presented a new concept for restoring the bank: the "bio-engineered" solution will reuse soil from the existing banks packed into "lifts" or blocks with fiber wrapping. Shrubs and trees are part of the design, with their roots penetrating and binding the new lifts so that eventually the bank will resemble a natural one. This concept, and the involvement of PWA, is a major improvement over previous proposals, but it does depend on more extensive plantings.

A major discussion topic in October was the proposed removal of non-native acacia trees to give the new plants a chance to get established and also to reduce shading of the native oaks and redwoods. At a second meeting on March 24, the District biologist reported that state agencies

(Department of Fish & Game, Regional Water Quality Control Board) are requiring removal of three non-native black acacia trees and their replacement with native species as part of the permit requirement for the project. Two native trees, an oak and a box elder, will also be removed because they are in the reconstruction areas; six new native trees would be planted. Proposed replacements



Recent scene at Glen Echo creek between Monte Vista and Montell, looking upstream toward Monte Vista: an oak tree fell and a section of the bank slid.

would be young, and thus smaller in size, oaks, buckeyes and alders. Although Mr. Blomberg warned that the site would look bare right after construction, the replacement plants and trees will establish better root systems when planted in small sizes. This is especially important because although there would be some professional watering and care for the first few years, eventually the plants would need to be drought tolerant, not depending on supplemental

water every summer.

The existing pathway will be reconstructed and a few boulders added as short-term "perches" similar to those in the park across the street. Community members asked if lighting could be included; the City and County representatives agreed to look into how to fund it.

This portion of the park will be closed during construction, scheduled for August through October (another permit requirement). Community members urged the District to fence off areas around existing trees and provide contact numbers so that they can notify the County of any problems during construction.

Watch for information posted at the creek or get updates at the regular workdays—2nd Saturday of each month, 9:30 am to noon.

Planting List

Trees

- California buckeye (3)
- White alder (3)
- Coast live oak (3)

Shrubs

- Western redbud (15)
- Red-stemmed dogwood (34)
- Toyon (4)
- Flowering currant (38)
- California rose (33)
- California blackberry (108)

Perennials

- Douglas iris (158)
- California honeysuckle (14)
- Western sword fern (76)
- Giant chain fern (10)

PANIL'S MEETING DATE HAS CHANGED!!!

Starting in May, PANIL will meet on the second Wednesday of every month.

May PANIL Meeting—Wednesday, May 14, 7:30 pm
Piedmont Gardens, 110 41st Street, 11th Floor, Sky Room

Topic: Oakland's Budget

Speaker: Justin Horner, Chief of Staff, Councilmember Jane Brunner

June Meeting: City Tours

To place an item on May's agenda, please email jopl@mindspring.com or call 420.0570

**Piedmont Avenue
Neighborhood
Improvement League**
PO Box 20375
Oakland CA 94620
www.panil.org

PANIL Notes is the monthly publication of the Piedmont Avenue Neighborhood Improvement League (PANIL). Writing, editing, and layout are all done by volunteers. Articles may be reprinted only with the permission of the editors. To submit story ideas or articles call 655.1723 or email rklahti@aol.com
Circulation: 2,000 copies.

**Steering Committee
And Working Groups**

Arts/Culture/History

Jim Ploss
420.0570

jopl@mindspring.com

Finance/Membership

Bess Ellinger
923.1748

ellinger@netscape.net

Library/School/Underwriting

Joan Dark

339.6460, Ext 1316

Newsletter/Media Relations

Ronile Lahti
655.1723

rklahti@aol.com

Parks/Gardens

Joanna Smith
653.4052

Public Safety

Bill Manley
658.2419

bmanleynow@yahoo.com

Zoning/Building

Valerie Winemiller
653.4552

PANSA

John Woodbury
654.6591

drjohnw@ix.netcom.com

PAMA

Ann Kraynak
428.2698

**City Government
District 1 Councilmember**

Jane Brunner
238.7001

jbrunner@oaklandnet.com

**District 1 School Board
Representative**

Kerry Hamill
879.8661

khamill@ousd.k12.ca.us

**Oakland Police
Department**

Sandi Mauricio
Neighborhood Services Coordinator
615.5929

smauricio@oaklandnet.com

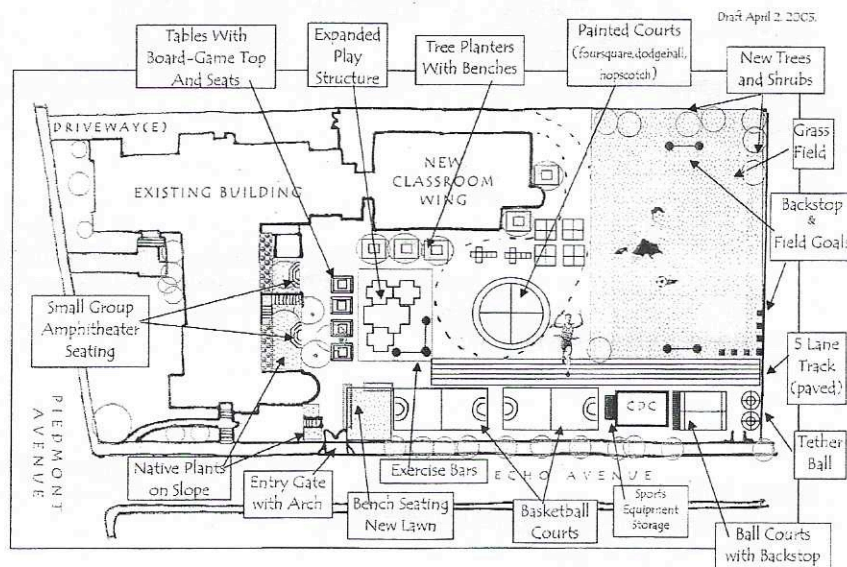
Lt. Lawrence Green
lgreen@oaklandnet.com

PANIL Notes

Coordinator—Ronile Lahti
Editing—Gail Jara and Joan Dark



OWL PARK



Raffle to raise money for new neighborhood park

To raise funds for our new neighborhood park on the grounds of Piedmont Avenue School, students are selling tickets for a raffle to be held on June 4—\$2/ticket. Great prizes have been received from Baywolf Restaurant, Pioneer Bike, Tropix Restaurant, Realtor Joan Dark, and others. Tickets are available from students; at Piedmont Copy, 4237 Piedmont Avenue; or by mail. Send a self-addressed, stamped envelope to PANSA (Piedmont Avenue Neighborhood School Association) c/o John Woodbury, 246 John Street, Oakland, 94611. (Minimum of 5 tickets, \$10, for mail orders, please.) Tickets can also be purchased at Piedmont Avenue School's Open House on May 21, at 7 pm. For more information, call John Woodbury at 654.6591.

Book sale benefits school

By Elizabeth Hanson

The Reading Partners Bargain Book Sale on March 25 raised \$160 for the Library at Piedmont Avenue School. Generous individuals and bookstores (Alta Bates Showcase, Bookmark, and Spectator) contributed almost one thousand books, plus forty dollars in cash! Fifteen volunteers worked to sort and price the books, to cashier, and to help students select books.

A few of the special books were donated to the school library collection. A raffle was held for three copies of HARRY POTTER. Delighted students paid 10 cents each for over 500 books, and 25 cents each for over 260 books. A few bought books for 50 cents and one dollar. Over 90% of the students shopped during the one-day sale, and spent \$120.

Reading Partners sends its thanks to the volunteers and contributors who made the sale such a success.

FYI

On the web—www.panil.org

Oakland budget information

To receive PANIL email updates

Email rklahti@aol.com

Coming in July

Oakland Heritage Alliance tour of the Piedmont Avenue Neighborhood—details in June PANIL Notes.

PANIL vegetable garden tour

Gardens are still needed for the tour tentatively planned for either Saturday or Sunday the weekend of July 12-13th. If you'd like to showcase your efforts, please contact Joanna Smith at 653.4052.

Bulldog Award

Congratulations to Piedmont Avenue resident Sanjiv Handa who recently received "The Bulldog" award from the Society of Professional Journalists.

Zoning updates

By Valerie Winemiller

Fentons approved, appealed

Although Fentons' owner is following plans different from those shown to neighbors, and although city staff had made numerous errors in the review process, the Planning Commission approved Fentons' addition as built, denying only a requested variance to put a sign on the rooftop. The decision has been appealed by the owners of the adjacent property. No hearing date is set yet for the appeal. Neighbors are meeting with Fentons' owner to discuss the numerous operational issues, including truck traffic and late night employee noise.

Cemetery development gets better review

Mountain View Cemetery's proposed mausoleum and chapel addition is now undergoing an initial study—the process which will determine whether a partial ("focused") Environmental Impact Report (EIR) is needed. The Cemetery has reportedly made some design revisions to the siting of the development on the entry circle. The study results may be ready for public notice as soon as late May, with a possible review at the June Landmarks Advisory Board meeting. PANIL and Oakland Heritage Alliance urged these reviews, citing state law for historic properties.

4902 Broadway

Eight units of loft-style condominiums have been approved for a parking lot next to Berkland TV Repair. The decision has been appealed by residents of condos at 288 Whitmore.

Monte Cresta apartments postponed

Scheduled talks with the developer proposing 12 units at 89 Monte Cresta have been postponed until further notice, due to a personal emergency.

In-law problems no joke

A new state law requires all cities to permit in-law (or secondary) units in all residential zones without discretionary review. This could include backyard cottages. Conditional Use Permits and public notice now required in many neighborhoods will be outlawed when the state law takes effect July 1. The city is now drafting more limited checklist standards to replace the current subjective reviews.

PANIL

Livable communities vs. budget shortfalls

By Ronile Lahti

What do we like most about our neighborhood? What could use a little work? What are our top two priorities? These were the questions Councilmember Jane Brunner asked as she presented her North Oakland Livable Communities project at the April PANIL meeting.

What are the strengths and weaknesses of neighborhood sidewalks, roads, lighting, cleanliness, crime prevention, walkability, retail shops and services, traffic safety, youth and senior services, schools, libraries and cultural services, fire safety, parks, bike facilities, and buses and BART.

Generally, people at the PANIL meeting said they were satisfied with the neighborhood's character. However, they also felt there is room for improvement: clean up the blight at the MB Center at Broadway and MacArthur; give us longer stop lights; make better retail use of the Broadway corridor between Pleasant Valley Road and MacArthur; provide more after school programs and city support for Piedmont Avenue School; give us a larger branch library; move the curbside mail boxes at the post office; open the elementary school for evening classes; provide bike lanes and bike parking; post more readable bus schedules at bus stops. And, the Avenue needs a hardware store!

What two items did residents want included in the next budget? Sidewalks and the library, closely followed by traffic safety and parks.

Unfortunately, next year's General Fund has a projected shortfall of up to \$46.5MM, and another \$11-12MM is projected FYE 2005. The city manager says cuts will be considered for everything including library services, eliminating some of the neighborhood services coordinator positions (sound familiar?), and reductions to other community services. Get specifics at www.panil.org.

Steering committee election

Nominations for the PANIL Steering Committee are now open for the July election. If you are interested in running for a position on the Steering Committee, please contact Bess Ellinger at 923.1748 or ellinger@netscape.net.

Calendar

PANIL

General Meeting

5/14, Wednesday, 7:30 pm
Sky Room, 11th Floor
Piedmont Gardens
110 41st Street, 655.1723

Steering Committee

6/5, Thursday, 7 pm
655.1723

Glen Echo Creek

Work Day

6/7, Saturday, 9:30 am
Monte Vista Avenue, 654.1930

PANSA

General Meeting

Book Care Night

6/3, Tuesday, 7 pm
Piedmont Avenue School

First Friday Night Out

6/6, Plymouth Church, 7 pm
Music, Board Games, Food
424 Monte Vista, 654.5300

Jane Brunner's

Yearly Picnic

6/22, Sunday
1 pm to 5 pm
North Temescal Picnic Area,
238.7001

Piedmont Avenue

Branch Library

160 41st Street
597.5011

Family Storytimes

Toddlers

Wednesday, 10:30 am

Pre School

Wednesday, 11 am

Lawyers in the Library

1st and 3rd Tuesdays, 5:45 pm

FOPL Book Sale

5/10, Saturday, 10 am

All proceeds will go towards the purchase of books, supplies, videos, and CDs, budget items currently frozen.

5/13, Tuesday, 7 pm

Author Tim Holt (*Songs of the Simple Life* and *On Higher Ground*) will discuss his ideas about living more simply.

Piedmont Avenue Neighborhood Improvement League
P.O. Box 20375
Oakland, CA 94620
www.panil.org

Count Me In!

Here's my check for \$_____ (minimum \$15.00) to join PANIL.

I will distribute PANIL Notes to my neighbors.

Name/s _____

Address _____

Phone/Email _____

Mail to PANIL, PO Box 20375, Oakland, CA 94620
Contributions to PANIL are not tax deductible

Please check your expiration date

Complimentary Copy

PANIL Notes is printed on recycled paper by Piedmont Copy Center, 4237 Piedmont Avenue, Oakland, CA, 655.3030.

Thank you to new and renewing members: Gerald Morris, Martin and Jane Foster, Crystal Weston, Philip and Helga Cohen, Cynthia Meier, Nancy Lovejoy, Gale Grey, Martin Wong and William Broueck, Lorna Jones, Barbara Langlois, Keira Williams, Nancy Dolphin and Larry de Grassi, Ted Crum, J. Furstoss, Christine Pattillo, Athena Sjoberg, Nicole Kanour, and Keith Hollon and Gayle Reynolds

Correction: The February 8 meeting on repeat offenders was hosted by the North Oakland Neighborhood Community Policing Councils; not the Community Policing Advisory Board.

Illustrations: Page 1, Valerie Winemiller; Page 2, John Woodbury



The Piedmont Avenue School
Reading Partners need you!
To volunteer call
Ruby Long at 595.9514 or
Donna Bersaglieri at 482.0862

Clean out your closets, basements, and attics—it's time for the

JOHN STREET JUMBLE

neighborhood yard sale

Saturday, June 28, 9 am to 1 pm

If you or your block wishes to participate—
call Leslie Mandros-Bell at 654.1386

Donate items to PANIL's booth—
call 655.1723 or email rklahti@aol.com



Joan Dark

The Neighborhood Realtor
Proud Supporter of Piedmont Avenue School

PACIFIC UNION

510.339.6460 X1316 — 1900 Mountain Boulevard



KAISER PERMANENTE®

280 West Mac Arthur Blvd—Oakland, CA 94611—510.596.1000
www.kaiser.org



CHAPEL of the
CHIMES

FUNERAL HOME

MAUSOLEUM

COLUMBARIUM

CREMATORY
(FD-1254)

City of Oakland
DISTINGUISHED
LANDMARK 129

4499 PIEDMONT AVENUE
OAKLAND CA 94611
510.654.0123
WWW.CHAPELOFTHETCHIMES.COM

Adjacent to Mountain View Cemetery
and to St. Mary's Catholic Cemetery



COMPLETE LINE OF
U.S.D.A. CHOICE MEATS
GOURMET PRODUCE
WINES & SPIRITS
GROCERIES-GOURMET FOODS
WITH PERSONALIZED SERVICE

Open 7 Days
Mon-Sat 9 am-8 pm
Sun 9 am-7 pm
FREE PARKING IN REAR

**PIEDMONT
GROCERY**

Credit Cards & ATM's Accepted
4038 PIEDMONT AVENUE
OAKLAND, CA 94611
510.653.8181

PANSA

Piedmont Avenue
Neighborhood
School Association

Piedmont Avenue School Library—4314 Piedmont Avenue

General Meeting and Book Care Night
—first Tuesday of each month, 7 pm

Call 510.654.6591 for more information

