

# PANIL Notes

Volume 28 Issue 9—Piedmont Avenue Neighborhood Improvement League—PO Box 20375—Oakland CA 94620—August 2003

## MOUNTAIN VIEW CEMETERY PRESERVATION ALERT!

### PANIL will appeal

By Valerie Winemiller

PANIL will ask for design revisions to the new chapel and mausoleum proposed for the central entry circle of Mountain View Cemetery. The proposal calls for a starkly modern 106-seat chapel and an 18,800 square foot mausoleum, both on the central entry circle. The result would be a radical change to the overall design of the cemetery. You can see the model in the lobby of the Cemetery office. Photos of the proposed construction appeared in past issues of PANIL Notes.

The Cemetery's plan was approved on July 11 by the Director of City Planning, in an action that included numerous procedural errors. For example, after Mayor Jerry Brown lobbied members in the hearing room just before the meeting started, the Landmarks Board voted to recommend approval of the project prior to end of the public comment period.

PANIL will appeal this approval. The appeal will be heard by the Planning Commission on August 6. PANIL will argue that the complex as it is designed has negative impacts on the historic buildings and landscape, as well as other detrimental consequences. PANIL recognizes the need for new facilities and the reason for selecting this plot at the entry circle as the site for the new construction, but PANIL will argue that the Cemetery's needs can be met with buildings that fit with the original plan and do not negatively impact the overall landscape.

The 1863 cemetery was laid out by Frederick Law Olmsted, designer of New York's Central Park. Olmsted is considered the founder of landscape architecture in America, and Mountain View Cemetery was his first major solo commission.

Unfortunately, in Oakland, the politics of this issue has silenced key local voices. Mayor Brown has been quoted saying that only two or three people care about the development. With its appeal, PANIL will register the community's opposition.

PANIL is receiving technical assistance from the Historic Landscape Initiative of the National Park Service, the Olmsted Center for Landscape Preservation (Brookline, MA), and the National Center for Olmsted Parks. The latter group and Oakland Heritage Alliance are also providing advocacy support. Also, local land use attorney Leila Moncharsh is working with PANIL.

### What you can do:

#### Call, e-mail or write, before Aug 6th.

(Please send copies of letters to PANIL, PO Box 20375, Oakland, CA 94612)

Tell the Mayor and the Planning Commission that the cemetery is a national treasure, that the design and siting are not compatible with other buildings on the entry circle, and that the cemetery's needs can be met with a design that does not negatively impact Olmsted's timeless landscape.

Attend the Planning Commission meeting when PANIL's appeal will be heard: Wednesday, August 6 at 6:30 pm in Hearing Room 1, City Hall, 14th and Broadway. Parking is free in the Clay Street garage for Commission meetings.

Send a check to help PANIL pay for the appeal. Write a check to PANIL, labeled "Mountain View Cemetery;" mail to P.O. Box 20375, Oakland CA 94612. The cost of the filing fee alone is \$512.

Spread the word widely. Tell your family, friends and walking companions—no matter where they live! Our Mayor has aspirations to state and possibly national office, so messages from throughout California and the nation can still carry weight.

For further info: Valerie Winemiller, 653.4552.

Photos are on PANIL's website at <http://www.panil.org>. You can send email messages directly from PANIL's website to the city officials listed in the box.

#### Mayor Jerry Brown

250 Frank Ogawa Plaza, Oakland, CA 94612,  
238.3141, [officeofthemayor@oaklandnet.com](mailto:officeofthemayor@oaklandnet.com)

Interim City Manager Deborah Edgerly  
238.3301, [citymanager@oaklandnet.com](mailto:citymanager@oaklandnet.com)

#### Councilmember Jane Brunner

250 Frank Ogawa Plaza, Oakland, CA 94612,  
238.7001, [jbrunner@oaklandnet.com](mailto:jbrunner@oaklandnet.com)

#### Leslie Gould, Director, Planning

250 Frank Ogawa Plaza, Oakland, CA 94612  
238.3941, [lgould@oaklandnet.com](mailto:lgould@oaklandnet.com)

Gary Patton, Deputy Director, Planning  
238.3912, [gpatton@oaklandnet.com](mailto:gpatton@oaklandnet.com)

#### Planning Commission

Clinton Killian, Chair, 625.8823  
[cokoaklandplanning@yahoo.com](mailto:cokoaklandplanning@yahoo.com)

Michael Lighty, 273.2200 x 242  
[mighty@calnurses.org](mailto:mighty@calnurses.org)

Nicole Franklin, 415.749.2592  
[nicole.franklin@sfgov.org](mailto:nicole.franklin@sfgov.org)

Colland Jang, 839.2820  
[colland@aol.com](mailto:colland@aol.com)

Suzie W. Lee, 836.6688  
[suzie@yhia.net](mailto:suzie@yhia.net)

Mark McClure, 893.4405  
[mark\\_mcclure@alarconbohnm.com](mailto:mark_mcclure@alarconbohnm.com)

Anne Mudge, 415.617.8900  
[aemudge@stoel.com](mailto:aemudge@stoel.com)

**August  
PANIL  
Meeting**

**Wednesday, August 13, 7:30 pm**  
Piedmont Gardens, 110 41st Street, Sky Room, 11th Floor

**Agenda Items: How to research your house / Mountain View Cemetery update**

To place an item on the agenda, call Jim Ploss at 420.0570  
or email [jopl@mindspring.com](mailto:jopl@mindspring.com)

**Piedmont Avenue  
Neighborhood  
Improvement League  
PO Box 20375  
Oakland CA 94620  
www.panil.org**

PANIL Notes is the monthly publication of the Piedmont Avenue Neighborhood Improvement League (PANIL). Writing, editing, and layout are all done by volunteers. Articles may be reprinted only with the permission of the editors. To submit story ideas or articles call 655.1723 or email rklahti@aol.com  
Circulation: 2,000 copies.

**Steering Committee  
And Working Groups**

**Arts/Culture/History**

Jim Ploss  
420.0570

jopl@mindspring.com

**Finance/Membership**

Bess Ellinger  
923.1748

eaellinger@earthlink.net

**Library/School/Underwriting**

Joan Dark

339.6460, Ext 1316

**Newsletter/Media Relations**

Ronile Lahti

655.1723

rklahti@aol.com

**Parks/Gardens**

Joanna Smith

653.4052

**Public Safety**

Bill Manley

658.2419

bmanleynow@yahoo.com

**Zoning/Building**

Valerie Winemiller

653.4552

**PANSA**

John Woodbury

654.6591

drjohnw@ix.netcom.com

**PAMA**

Ann Kraynak

428.2698

**City Government**

**District 1 Councilmember**

Jane Brunner

238.7001

jbrunner@oaklandnet.com

**District 1 School Board**

**Representative**

Kerry Hamill

879.8661

khamill@ousd.k12.ca.us

**Oakland Police  
Department**

Sandi Mauricio

Neighborhood Services Coordinator

615.5929

smauricio@oaklandnet.com

Lt. Lawrence Green

238.7147

lgreen@oaklandnet.com

**PANIL Notes**

Editing—Gail Jara and Joan Dark

Layout—Ronile Lahti

**City CarShare arrives  
at Piedmont Ave!**

By Daryl C. Norcut

**A**lternative transportation meets alternative fuel technology as City CarShare brings its first East Bay hybrid vehicle to the Piedmont Avenue neighborhood.

On July 25, 2003, City CarShare launched its eighth Oakland 'pod' location with a brand new Honda Civic hybrid. The new neighborhood car is parked right behind J's Hamburgers and Such, in the City of Oakland municipal parking lot, and is available to all City CarShare members, 24-hours a day, on an hourly-reservation basis. Members also have access to vehicles parked throughout Oakland, Berkeley, San Francisco, Palo Alto, and Mountain View. With the addition of the Piedmont Ave pod, there are now over 40 City CarShare locations for Bay Area residents and businesses to enjoy as an alternative to owning a car!

**The costs to join City CarShare:**

\$30 application fee

\$300 deposit (which is fully refundable)

\$10 a month administrative fee

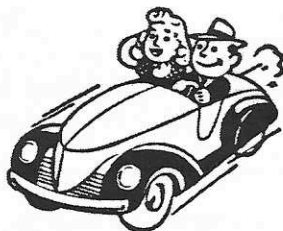
Once approved, you pay only for the time and distance that you drive: \$4 per hour (half off between 10 PM and 10 AM), and 44 cents per mile. These rates cover gas, insurance, maintenance, and everything else normally associated with car ownership.

The average City CarShare member's monthly bill is \$65. Compare that to \$500, which is what AAA estimates the average Bay Area resident spends to own a car.

This program is an ideal, environmentally friendly way to meet transportation needs. Even if you own a car, City CarShare is the perfect second car (not to mention a less expensive option.)

It's easy to apply! Visit the City CarShare website at [www.citycarshare.org](http://www.citycarshare.org) and fill out an on-line application.

If you have questions about how car-sharing works or if you need more information, please call Daryl C. Norcott, East Bay Director, at 352.0323 x309



**3rd annual garden tour**

By Ronile Lahti

**T**he Garden Group did it again! This tour had everything—an example of the John Jeavons Biodynamic/French intensive Method (David and Ann Blood's vegetable garden), an unusual use of rebar as sculpture and plant frames (Jane Ellison and Sally McCaffrey), a large (12 x 50 feet) vegetable garden with the neighborhood's tallest sunflowers

Continued on page 3

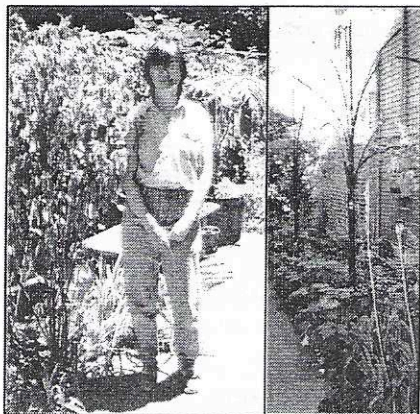


Garden tour continued from page 2

(Dawn, Jay, Tate, and Cody Pieper), an English country garden complete with backyard pond (Sally Bowden and Steve Shlisky), and the ever popular cottage garden of Lorinda Hartwell—it's like walking into a big bouquet!

Thanks to Joanna Smith and the Garden Group, Pat Tavenner who designed this year's poster, Joan Dark, all the gardeners, and all of you who took the tour.

Go to <http://www.panil.org> for more pictures.



Pictures: (page 2) Organizers Joan Dark and Joanna Smith, David and Anne Blood with neighbors Valerie Wong and daughter, Lia Xili Eilbeck, Lorinda Hartwell, (page 3) Sally Bowden, the "rebar," and Cody and Tate Pieper

## TRANSIT VILLAGE

### MacArthur BART

by Jim Ploss

**A** Citizens Planning Committee (CPC) has been working in conjunction with BART and the city of Oakland for the past ten years to create a community-friendly Transit Village Development at the MacArthur BART Center.

Until June of this year, a company called Creative Housing Associates had exclusive development rights to the property. (Their website <http://www.challc.com/> still contains information on the development.) However, officials terminated discussions with the company after Creative Housing proposed a 170,000 sq. ft. Target store for the site and requested an \$8,000,000 operating subsidy from the city plus construction subsidies. Both BART and the city are currently considering issuing new requests for proposals. Seven different development companies have expressed interest.

The first phase of a similar development is under construction at the Fruitvale BART station (<http://www.fhwa.dot.gov/environment/ejustice/case/case6.htm>)

The Citizens Planning Committee meets monthly from 6:30 – 8:00 pm on the 3<sup>rd</sup> Wednesday of each month at the Mosswood Recreation Center. All community residents are welcome to participate. Bill Manley is the PANIL representative on the CPC. His reports appear in PANIL Notes.

At the June meeting a representative from Alameda County suggested that a transit hub like MacArthur BART would be an excellent location for a large childcare center. This was received as such an obviously beneficial idea that everyone was embarrassed not to have thought of it previously.

## The election results are in!

By Bess Ellinger

**T**he 2003-2004 Steering Committee is comprised of Joan Dark, Bess Ellinger, Bill Manley, Jim Ploss, and Valerie Wine-miller. Our voter "turnout" was impressive for an uncontested election—35% of the ballots that were mailed out were returned. If you weren't able to run for the Steering Committee, but have some time you could spare to help with PANIL activities, please contact Bess Ellinger at 923.1748 or [eaellinger@earthlink.net](mailto:eaellinger@earthlink.net).

## Calendar

### PANIL

8/13, Wednesday, 7:30 pm  
Sky Room, 11th Floor  
Piedmont Gardens  
110 41st Street, 653.4552

### Steering Committee

8/7, Thursday, 7 pm  
655.1723

### Glen Echo Creek Work Day

8/9, Saturday, 9:30 am  
Monte Vista Avenue, 654.1930

### PANSA

### General Meeting Book Care Night

8/5, Tuesday, 7 pm  
Piedmont Avenue School

### First Friday Night Out

8/1, Plymouth Church, 7 pm  
Music, Board Games, Food  
424 Monte Vista, 654.5300

### Piedmont Avenue Branch Library 160 41st Street 597.5011

### Family Storytimes Toddlers

Wednesday, 10:30 am  
Pre School  
Wednesday, 11 am

**Summer Reading Program—**  
through the month of August.  
Sign up at the branch.

### NOTE: Lawyers in the Library

Will no longer be at our branch.  
Go to Temescal Branch,  
51st and Telegraph,  
5:45 pm, Mondays

For more community activities, go  
to <http://www.panil.org/calendar>.

If you have a community activity  
you'd like placed on the newsletter  
or web calendar,  
contact Minnie Sage at  
[mamsage@earthlink.net](mailto:mamsage@earthlink.net).

**Piedmont Avenue Neighborhood Improvement League**  
**P.O. Box 20375**  
**Oakland, CA 94620**  
**www.panil.org**

### Count Me In!

\_\_\_\_ Here's my check for \$ \_\_\_\_\_ (minimum \$15.00) to join PANIL.

\_\_\_\_ I will distribute PANIL Notes to my neighbors.

Name/s \_\_\_\_\_

Address \_\_\_\_\_

Phone/Email \_\_\_\_\_

Mail to PANIL, PO Box 20375, Oakland, CA 94620

Contributions to PANIL are not tax deductible

Please check your expiration date

## Complimentary Copy

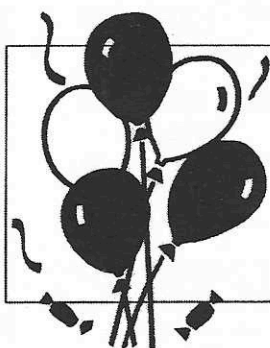
PANIL Notes is printed on recycled paper by Piedmont Copy Center, 4237 Piedmont Avenue, Oakland, CA 94612, 655.3030

**Thank you to new and renewing members:** Rita Kresha and Susan Vanderburgh, JoAnne and Alan Bernstein, Jeff Beeby and Julie Graffagna, Nancy Sampson, Mae Liu, Janice and Allan Gobeille, Janie Wilson and Ron Prather, Clara Williamson, Michael Madden and Barbara Angelli, Jim Ploss and Peg Janosch, Louis and Susan Segal, Eileen Conneely, Judith Bowman, Diane Damonte, Lynne Jones and Roger Baxter, Margitta Gardner, James Leventhal and Karen Klier, Robert Zatko and Beth Miller, Ronile Lahti, Peter Hopkinson and Wendy Woolpert, and David and Jennifer Murov.

**Illustrations:** Page 2 and 3, Ronile Lahti



**The Piedmont Avenue School  
Reading Partners need you!**  
To volunteer call  
**Ruby Long at 595.9514 or  
Donna Bersaglieri at 482.0862**



**Support our Avenue  
Merchants  
Shop Local**



**Joan Dark**

**The Neighborhood Realtor  
Proud Supporter of Piedmont Avenue School**

**PACIFIC UNION**

510.339.6460 — 1900 Mountain Boulevard



**KAISER PERMANENTE®**

280 West Mac Arthur Blvd—Oakland, CA 94611—510.596.1000  
www.kaiser.org



**CHAPEL of the  
CHIMES**

**FUNERAL HOME**

**MAUSOLEUM**

**COLUMBARIUM**

**CREMATORY**

(FD-1254)

**City of Oakland  
DISTINGUISHED  
LANDMARK 129**

**4499 PIEDMONT AVENUE  
OAKLAND CA 94611  
510.654.0123  
www.chapelofthechimes.com**

Adjacent to Mountain View Cemetery  
and to St. Mary's Catholic Cemetery



**COMPLETE LINE OF  
U.S.D.A. CHOICE MEATS  
GOURMET PRODUCE  
WINES & SPIRITS  
GROCERIES-GOURMET FOODS  
WITH PERSONALIZED SERVICE**

Open 7 Days  
Mon-Sat 9 am-8 pm  
Sun 9 am-7 pm  
**FREE PARKING IN REAR**

**PIEDMONT  
GROCERY**

Credit Cards & ATM's Accepted  
**4038 PIEDMONT AVENUE  
OAKLAND, CA 94611  
510.653.8181**

**PANSA**

**Piedmont Avenue  
Neighborhood  
School Association**

Piedmont Avenue School Library—4314 Piedmont Avenue

General Meeting and Book Care Night  
—first Tuesday of each month, 7 pm

Call 510.654.6591 for more information

